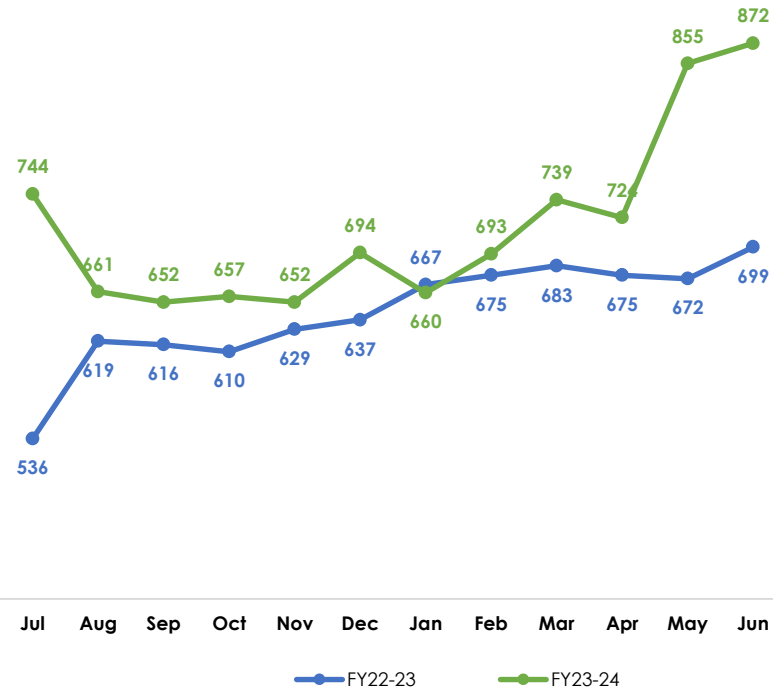
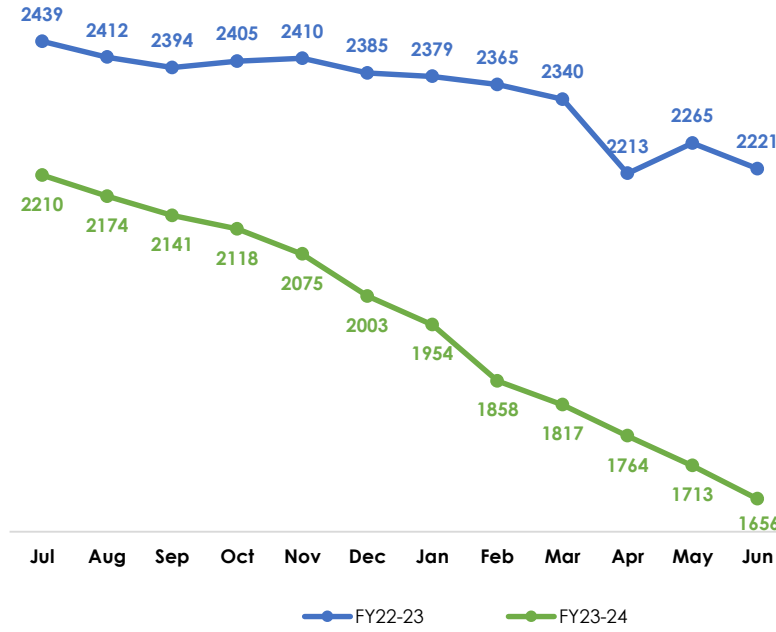


# Chief Executive Officer Report - July 2024

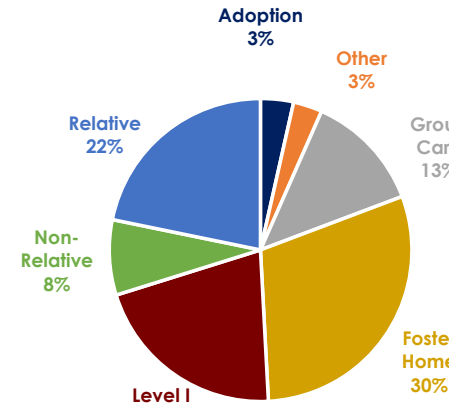
## Children Receiving In-Home Services



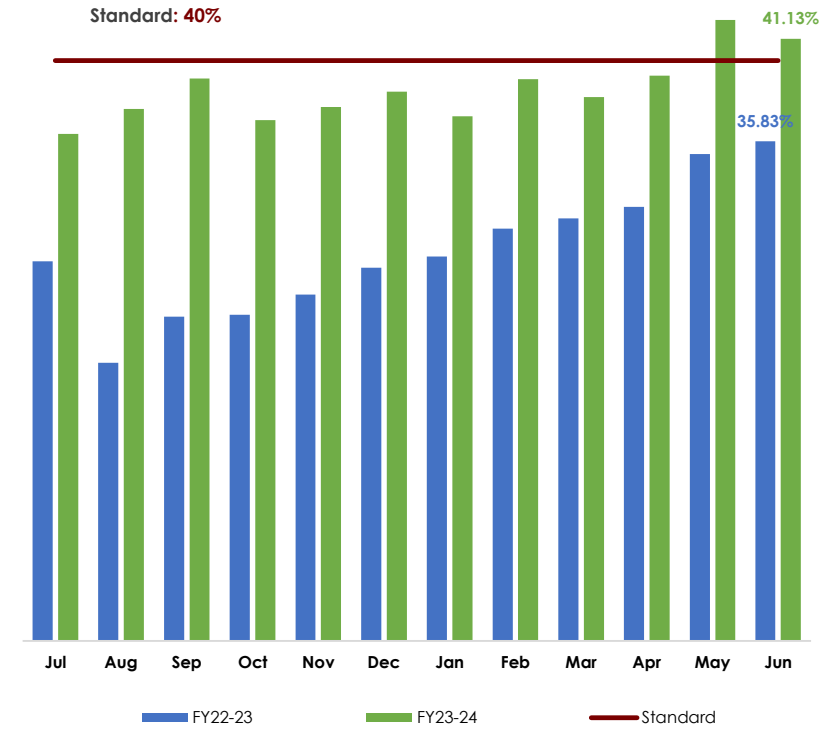
## Children Receiving Out of Home Services



## Children in Out of Home Care by Service Type



## Level I Licenses



## IFST Referrals

FY22-23 (Jul-Jun)	FY23-24 (Jul-Jun)	Change
1726	1809	5% ↑

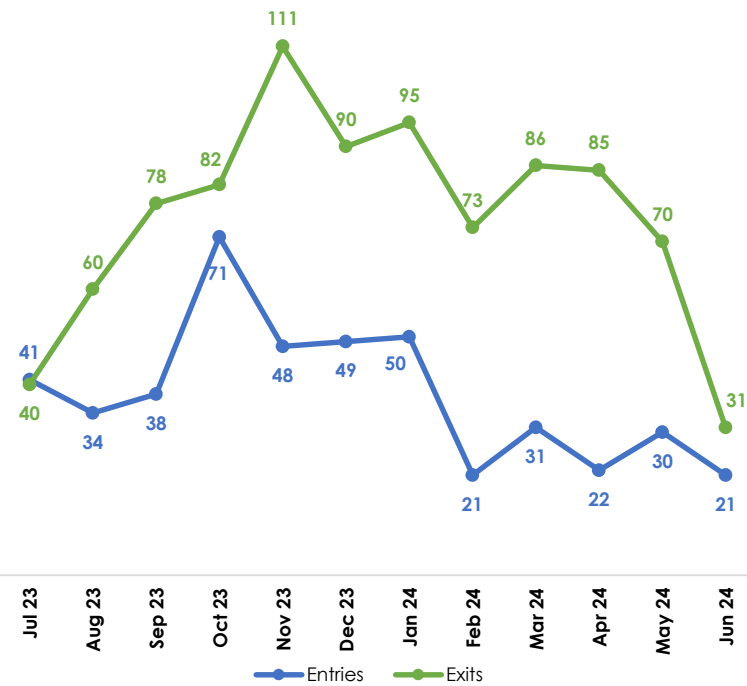
## Children Sheltered

FY22-23 (Jul-Jun)	FY23-24 (Jul-Jun)	Change
663	456	31% ↓

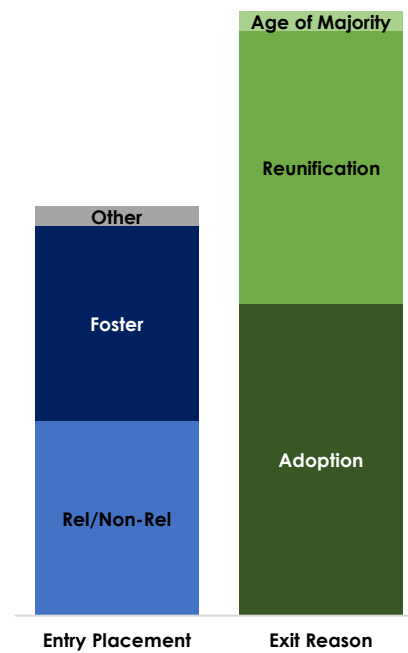
## Adoptions

Permanently Committed	500
(credit: 421)	
Adoptive Placement	58
Goal:	218

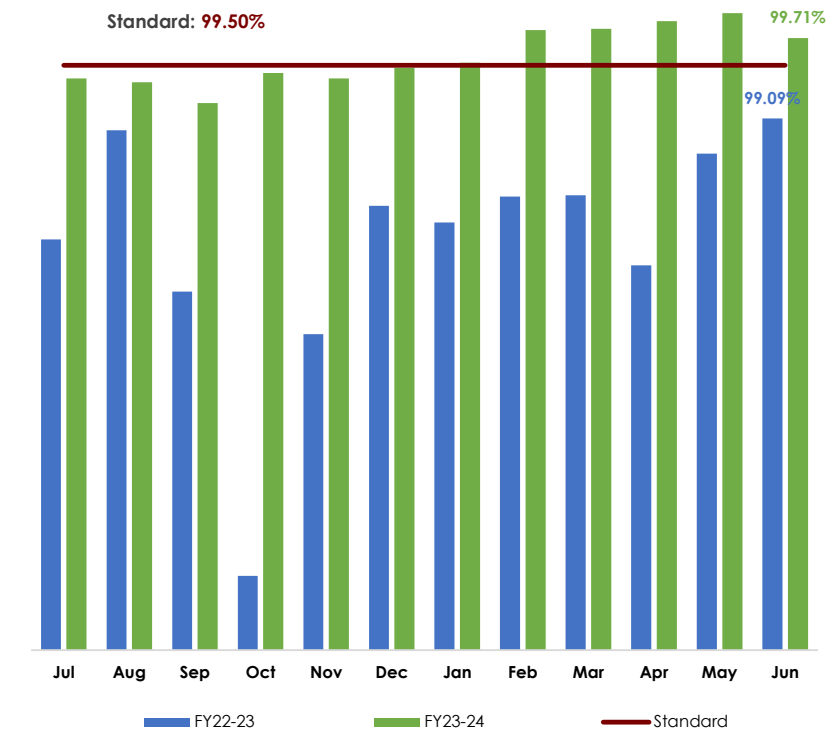
## Children Entering & Exiting Foster Care



## Entry Placements & Exit Reasons



## Children Seen



## Foster Families & Pre-Service

Informational Sessions	8
Classes Graduated	9
Awaiting Pre-Service	27
Currently in Pre-Service	19
In Initial Licensing Process	47

\*Data presented is for the close of Fiscal Year 2023-2024 and is effective as 7.1.2024

\*\*The most recent quarter's data is considered DRAFT data and is subject to change with year-end updates.

\*\*\*Data sources for this report include: Mindshare (Children Served), Florida Safe Families Network (Entries/Exits), CNHC Family Support Services (Shelters), CNHC Department of Licensing (Foster Home Capacity).

## Children Served & Primary Case Management (including Independent Living) - July 2024

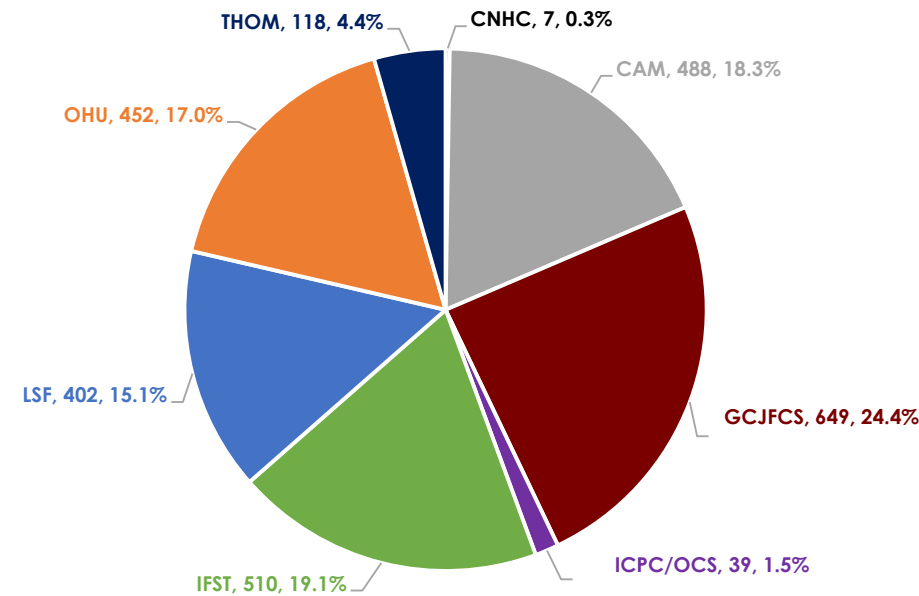
Children Served by Service Type									
	CNHC	CAM	GCJFCS	ICPC/OCS	IFST	LSF	OHU	THOM	Total
In-Home	7	73	119	39	510	39	64	21	872
Out-of-Home	0	278	530	0	0	363	388	97	1656
Independent Living	0	137	0	0	0	0	0	0	137
<b>Total</b>	<b>7</b>	<b>488</b>	<b>649</b>	<b>39</b>	<b>510</b>	<b>402</b>	<b>452</b>	<b>118</b>	<b>2665</b>

Out-of-Home Care Placement Categories by CMO (including IL)								
	CNHC	CAM	CAM (IL)	GCJFCS	LSF	OHU	THOM	Total
Relative	0	53	0	117	88	86	21	365
Non-Relative	0	39	0	28	24	36	8	135
Kinship Level I	0	51	0	104	96	82	15	348
Foster Home	0	98	0	167	89	121	20	495
Residential	0	32	0	71	42	41	24	210
Independent Living	0	0	137	0	0	0	0	137
Other	0	5	0	43	24	22	9	103
<b>Total</b>	<b>0</b>	<b>278</b>	<b>137</b>	<b>530</b>	<b>363</b>	<b>388</b>	<b>97</b>	<b>1793</b>

Age				
Age 0-5	Age 6-12	Age 13-17	Age 18+	Total
1065	926	537	137	2665
39.96%	34.75%	20.15%	5.14%	100%

Gender		
Male	Female	Total
1312	1353	2665

CLS Staffing Rates	
Attorney	Support Staff
93.94%	95.45%



Primary Assignments			
	Primary Children Assigned	Children Funded (per 1:20 ratio)	Children +/- to Meet 1:20 Ratio
CAM	351	600	249
CAM (IL)	137	N/A	N/A
GCJFCS	649	800	151
LSF	402	600	198
OHU	452	600	148
THOM	118	160	42
<b>Total</b>	<b>2109</b>	<b>2760</b>	<b>788</b>

Primary Caseloads				
	CM Primary Caseloads >25	Average Primary Caseload	CM Turnover	CMS Turnover
CAM	0	12	43.33%	60.00%
CAM (IL)	1	21	N/A	N/A
GCJFCS	0	10	48.00%	36.36%
LSF	0	12	63.33%	60.00%
OHU	0	10	60.00%	0%
THOM	0	6	38.46%	0%
<b>SOC Total</b>	<b>1</b>	<b>10</b>	<b>51.63%</b>	<b>34.48%</b>

Race						
White	Black	Asian	American Indian	Hawaiian	All Other	Total
1386	1242	21	2	0	14	2665

\*Data presented as of 7.1.2024

\*\*The most recent quarter's data is considered DRAFT data and is subject to change with year-end updates.

\*\*\*Data sources for this report include: Mindshare (Children Served), Florida Safe Families Network (Entries/Exits), CNHC Family Support Services (Shelters), CNHC Department of Licensing (Foster Home Capacity).



## Performance Measures

Measure Description	Standard	Jun-24	May-24	Apr-24	Mar-24	Feb-24	Jan-24	Dec-23	Nov-23	Oct-23	Sep-23	Aug-23	Jul-23
Percent of children with no verified maltreatment within six months of termination of supervision.	<b>95.00%</b>	96.38%	95.74%	96.26%	96.27%	95.33%	95.67%	95.49%	95.19%	95.28%	95.78%	96.10%	96.26%
Children with no recurrence of verified maltreatment within 12 months of a prior verified maltreatment.	<b>90.90%</b>	92.97%	91.88%	91.53%	90.68%	90.25%	90.44%	90.62%	90.76%	91.29%	91.56%	92.28%	92.16%
Children achieving permanency within 12 months of entering care.	<b>41.00%</b>	17.63%	18.19%	20.43%	19.68%	19.90%	20.90%	23.02%	24.33%	23.42%	24.55%	24.50%	28.39%
Children achieving permanency within 12 months for children in Out-of-home care between 12 and 23 months.	<b>44.00%</b>	38.97%	40.45%	40.88%	37.21%	36.71%	36.53%	36.01%	37.19%	34.13%	35.62%	36.27%	35.58%
Children achieving permanency within 12 months for children in Out-of-home care for 24 months or more.	<b>30.00%</b>	46.52%	48.11%	47.23%	46.85%	45.77%	43.26%	41.06%	40.95%	38.92%	35.94%	33.03%	33.29%
Children who do not re-enter foster care within 12 months of moving to a permanent home.	<b>91.70%</b>	91.39%	91.00%	90.70%	89.24%	88.85%	88.66%	87.93%	86.25%	86.15%	86.96%	89.06%	91.35%
Percent of children not abused or neglected while in out-of-home care.	<b>98.00%</b>	98.39%	98.25%	98.29%	98.32%	98.23%	98.20%	98.03%	98.11%	98.41%	98.53%	98.50%	98.45%
Percent of children not abused or neglected while receiving in-home services.	<b>96.00%</b>	97.81%	97.70%	97.69%	97.44%	97.46%	97.43%	97.66%	97.62%	97.38%	97.31%	97.01%	96.27%
Percent of children under supervision who are seen every 30 days.	<b>99.50%</b>	99.71%	99.90%	99.84%	99.78%	99.69%	99.47%	99.74%	99.68%	99.70%	99.41%	99.59%	99.59%
Percent of cases with caseworker visits with parents monthly.	<b>80.00%</b>	52.90%	50.65%	53.97%	53.69%	50.88%	45.82%	36.04%	37.91%	38.26%	36.32%	40.81%	30.90%
Children's placement moves per 1,000 days in foster care.	<b>4 or less</b>	4.88	5.51	6.95	7.53	8.18	8.49	8.82	9.55	9.79	9.60	10.61	9.76
Percent of children placed with relatives or nonrelatives.	<b>65.00%</b>	51.14%	50.96%	52.19%	54.14%	54.62%	54.35%	54.90%	55.22%	55.58%	56.63%	57.43%	58.09%
Percent of sibling groups where all siblings are placed together.	<b>65.00%</b>	54.93%	55.72%	56.66%	57.04%	56.85%	57.05%	56.81%	57.70%	58.88%	59.49%	60.58%	60.87%
Number of children with finalized adoptions during each state fiscal year.	<b>FY Goal 218</b>	34	42	36	48	50	47	37	72	47	38	32	17
Percent of children in out-of-home care who received medical services in the last twelve months.	<b>95.00%</b>	96.78%	98.06%	97.88%	97.23%	97.81%	97.43%	96.83%	96.38%	95.24%	94.57%	92.87%	91.89%
Percent of children in out-of-home care who received dental services in the last seven months.	<b>95.00%</b>	90.69%	89.55%	91.41%	89.58%	86.81%	83.45%	82.41%	80.64%	79.56%	76.91%	77.02%	76.94%
Percent of Young Adults Exiting Foster Care at Age 18 Completed/Enrolled in Secondary/Vocational/Adult Education.	<b>95.00%</b>	76.27%	76.27%	77.59%	77.19%	75.00%	72.00%	74.07%	76.47%	74.55%	73.58%	74.00%	73.08%

\*Data presented as of 7.1.2024

\*\*The most recent quarter's data is considered DRAFT data and is subject to change with year-end updates.

\*\*\*Data sources for this report include: Mindshare (Children Served), Florida Safe Families Network (Entries/Exits), CNHC Family Support Services (Shelters), CNHC Department of Licensing (Foster Home Capacity).

