



**C13 - Primary Children Served by Jurisdiction of Case County
September 2023 - Hillsborough County [Includes IL Youth]**

Total Children Served: 2949

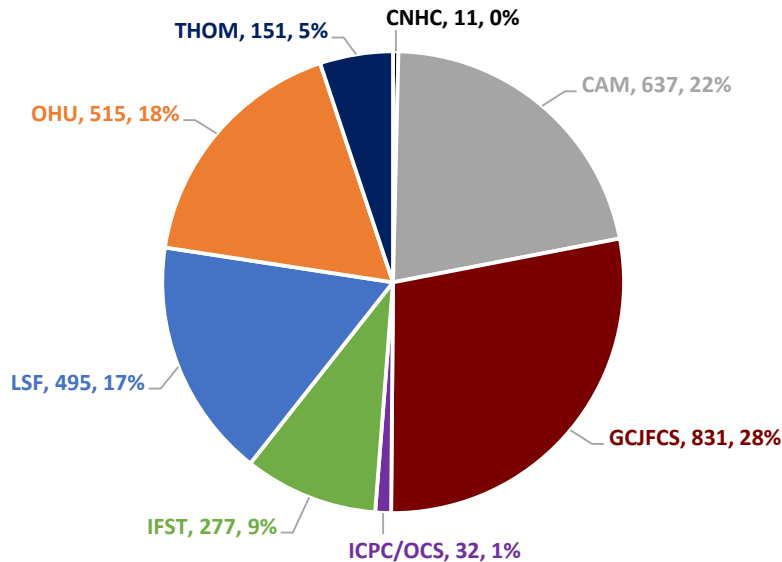
Children Served by Service Type									
	CNHC	CAM	GCJFCS	ICPC	IFST	LSF	OHU	THOM	Total
In-Home	5	95	102	32	277	61	75	7	654
Out-of-Home	6	542	729	0	0	434	440	144	2295
Total	11	637	831	32	277	495	515	151	2949

Kinship Relative/Non-Relative Placements by CMO							
	CNHC	CAM	GCJFCS	LSF	OHU	THOM	Total
Relative	4	107	191	140	130	41	613
Non-Relative	1	48	53	20	40	8	170
Total	5	155	244	160	170	49	783

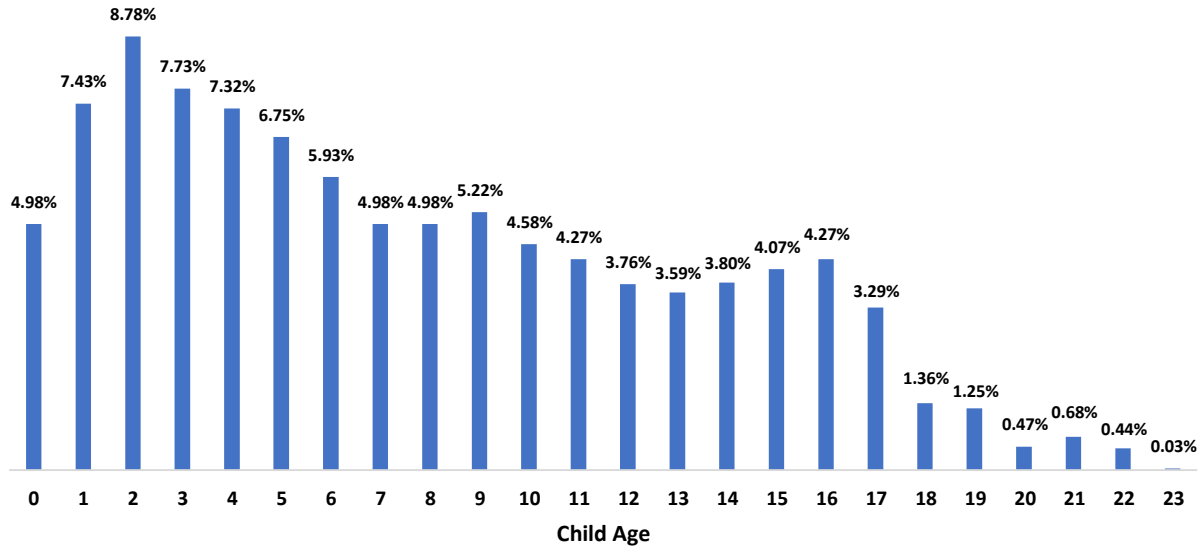
Licensed Foster Home Placements by CMO							
	CNHC	CAM	GCJFCS	LSF	OHU	THOM	Total
Kinship Level I	0	99	149	97	106	22	473
Foster Home	0	132	215	117	116	33	613
Total	0	231	364	214	222	55	1086

Other Out-of-Home Placements							
	CNHC	CAM	GCJFCS	LSF	OHU	THOM	Total
Other	1	156	121	60	48	40	426

Children Served by CMO



Children Served by Age				
Age 0-5	Age 6-12	Age 13-17	Age 18+	Grand Total
1268 (43.00%)	995 (33.74%)	561 (19.02%)	125 (4.24%)	2949



Children Served by Race						
White	Black	Asian	American Indian	Hawaiian	All Other	Total
1537	1376	17	3	5	11	2949

Children Served by Gender		
Male	Female	Total
1474	1475	2949